



ENGEL JACOBS
LONDON+HERTS



- **Ground Floor Flat**
- **Large Reception**
- **Private Rear Garden**
- **One Double Bedroom**
- **Fitted Kitchen**
- **Within Easy Reach Of The Town Centre And Elstree & Borehamwood Station**



Stapleton Road
Borehamwood

Monthly Rental Of
£950.00

Entrance Hall

Laminate floor throughout, entryphone, storage cupboard, radiator.

Bedroom 13' 1" x 9' 2" (3.98m x 2.79m)

Laminate floor throughout, double glazed windows to front aspect, radiator.

Reception 16' 4" x 11' 3" (4.97m x 3.43m)

Laminate floor throughout, double glazed windows to front aspect, radiator, storage cupboard.

Kitchen 8' 5" x 6' 9" (2.56m x 2.06m)

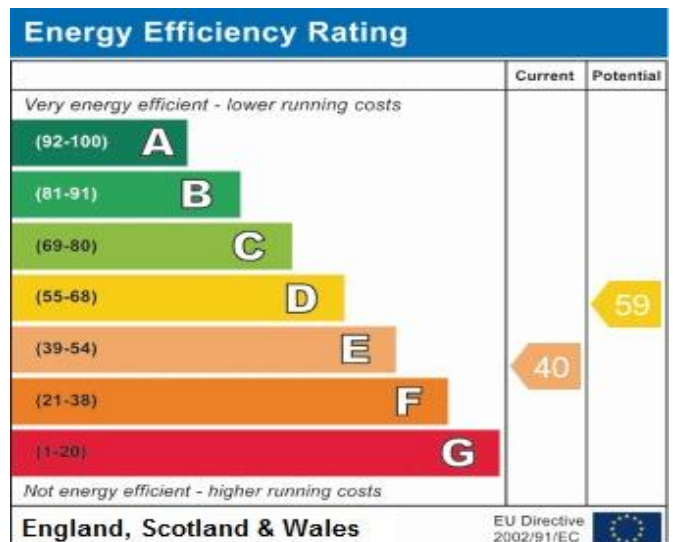
Tiled floor throughout, partly tiled walls, fully fitted units both wall mounted and base, Igenix fridge/freezer, Beko oven and electric hob, space for washing machine, double glazed windows and door to rear garden.

Bathroom 5' 7" x 7' 0" (1.70m x 2.13m)

Tiled floor, partly tiled walls, low level WC, pedestal wash basin with mixer tap, bath with overhead shower, obscured double glazed window to rear aspect.

Rear Garden

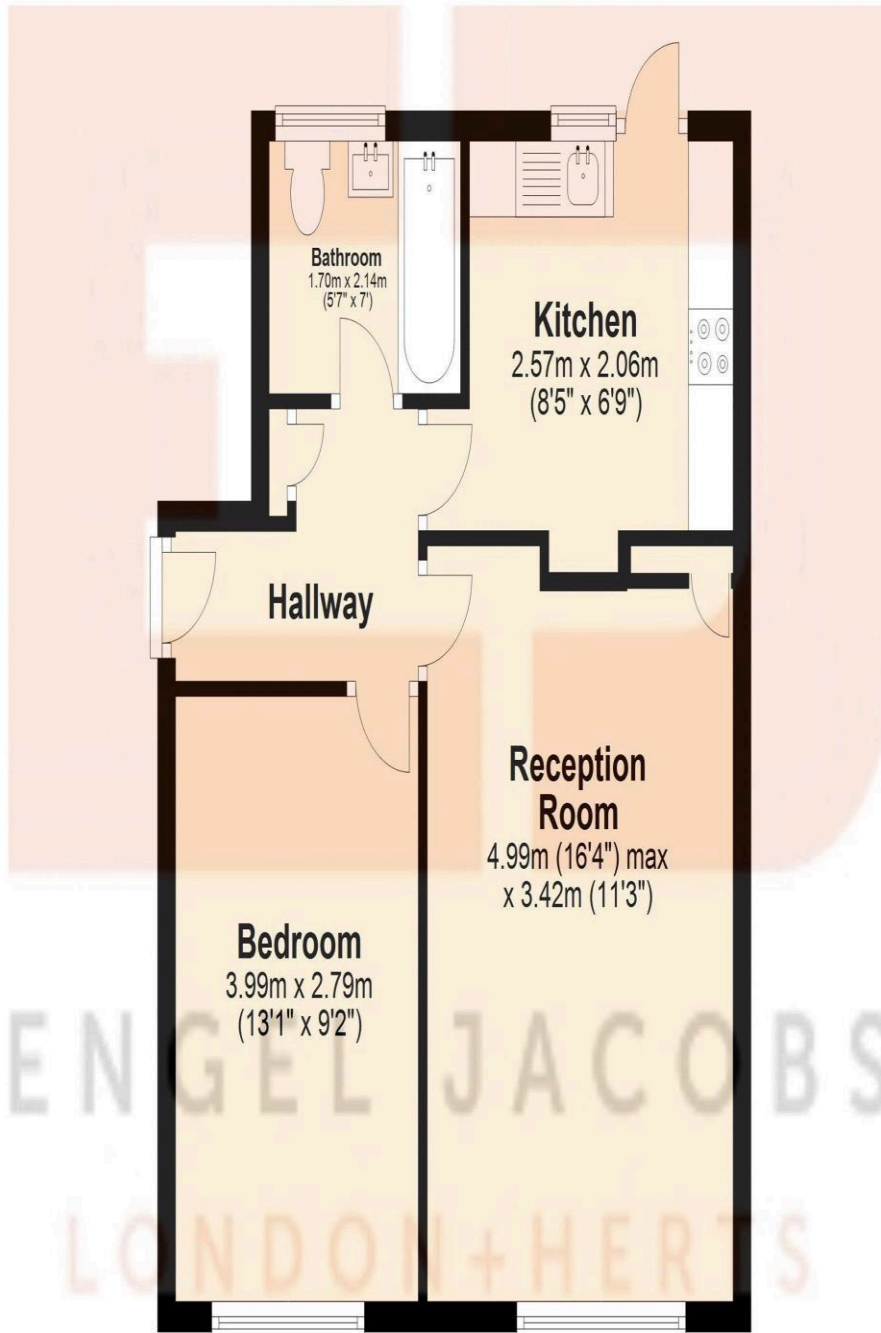
Large decked area, laid to lawn.



Address:
Stapleton Road, Borehamwood

Ground Floor

Approx. 45.4 sq. metres (488.8 sq. feet)



Total area: approx. 45.4 sq. metres (488.8 sq. feet)